

# GEMÜ 717

## Manually operated ball valve



### Features

- High flow rate
- Low weight
- Choice of various body materials and connection types
- Union nut with integrated spin-lock
- 2/2 and 3/2-way versions available
- Optionally available with control ball

---

### Description

The GEMÜ 717 2/2 or 3/2-way plastic ball valve has an ergonomically designed hand lever and is manually operated. The seat seal is made from PTFE and the O-ring seals can be made from either EPDM or FKM.

### Technical specifications

- **Media temperature:** -20 to 100 °C
- **Ambient temperature:** -10 to 50 °C
- **Operating pressure :** 0 to 16 bar
- **Nominal sizes:** DN 10 to 100
- **Body configurations:** 2/2-way body | Multi-port body
- **Ball configurations:** Control ball | L-port | T-port
- **Connection types:** Flange | Solvent cement socket | Spigot | Threaded connection | Union end
- **Connection standards:** ANSI | BS | DIN | EN | ISO | JIS | NPT
- **Body materials:** ABS | PP-H, grey | PVC-C, chlorinated | PVC-U, grey | PVDF
- **Seal materials:** EPDM | FKM
- **Conformities:** EAC

Technical data depends on the respective configuration



## Product line



GEMÜ 710



GEMÜ 717



GEMÜ 723

### Operation

Manual	-	●	-
Pneumatic	●	-	-
Motorized	-	-	●
<b>Nominal sizes</b>	DN 10 to 100	DN 10 to 100	DN 10 to 100
<b>Media temperature *</b>	-20 to 100 °C	-20 to 100 °C	-20 to 100 °C
<b>Operating pressure *</b>	0 to 16 bar	0 to 16 bar	0 to 16 bar
<b>Connection types</b>			
Flange	●	●	●
Solvent cement socket	●	●	●
Spigot	●	●	●
Threaded connection	●	●	●
Union end	●	●	●

\* depending on version and/or operating parameters

## Product description



Item	Name	Materials
1	Ball valve body	PVC-U, PVC-C, ABS, PP-H or PVDF
2	Pipe connections	PVC-U, PVC-C, ABS, PP-H or PVDF
3	Anti-twist protection	POM
4	Hand lever	HIPVC
	Ball valve seals	FPM, EPDM
	Ball valve seat seals	PTFE

## Port positions



### T-port

	CLOSED end position	OPEN end position	Condition as supplied to customer OPEN
Delivery condition			
<b>Code T</b>			
Optional port positions, can be user adjusted			
<b>Code 2</b>			
<b>Code 3</b>			
<b>Code 4</b>			

### L-port

	CLOSED end position	OPEN end position	Condition as supplied to customer OPEN
Delivery condition			
<b>Code L</b>			
Optional port positions, can be user adjusted			
<b>Code 6</b>			

**Control ball**

	Control ball	Scale
<b>Code R</b>	 A dark grey, spherical control ball with a white, crescent-shaped cutout on its side.	 A black valve body with a white scale ring on top. The scale ring has a black knob and a white ring with markings. A small white ring is shown above the scale ring.

For 0°- 90° control range, linear control characteristic between port position and percentage flow rate.

NOTE: Ball configuration (R) cannot be retrofitted to standard 2/2-way bodies at a later date.

## Availability

### Hand lever

DN	Manually operated (code 0)	Manually operated, lockable (code L)
10 - 50	X	X
65 - 100	-	X

### 2/2-way body (code D)

DN	Connection type code <sup>1)</sup>								
	2	4	33	39	3M	3T	78*	7R, 31	7R, 31
	Material code <sup>2)</sup>								
	1, 2, 4, 5, 20	1, 2, 5, 20	1, 4	1, 2, 5, 20	1, 2	1	1, 5, 20	1	4, 5
10	X	-	X	-	-	-	-	-	-
15	X	X	X	X	X	X	X	X	X
20	X	X	X	X	X	X	X	X	X
25	X	X	X	X	X	X	X	X	X
32	X	X	X	X	X	X	X	X	X
40	X	X	X	X	X	X	X	X	X
50	X	X	X	X	X	X	X	X	X
65	X	X	X	X	X	X	X	X	-
80	X	X	X	X	X	X	X	X	-
100	X	X	X	X	X	X	X	X	-

\* Inserts according to valve body material,  
special version: PE insert, design code 1187

Control ball only available for ball valves in PVC-U (code 1), PVDF (code 20) and PP-H (code 5) in nominal sizes DN 10 to 50.

#### 1) Connection type

Code 2: Union end with insert (solvent cement or weld socket) - DIN

Code 4: Union end with flange EN 1092, PN 10, form B, face-to-face dimension FTF EN 558 series 1, ISO 5752, basic series 1

Code 33: Union end with inch insert - BS (socket)

Code 39: Union end with flange ANSI Class 125/150 RF

Code 3M: Union end with inch insert – ASTM (socket)

Code 3T: Union end with JIS insert (socket)

Code 78: Union end with insert (for IR butt welding) - DIN

Code 7R: Union end with insert (Rp threaded socket) - DIN

Code 31: Threaded socket NPT

#### 2) Ball valve material

Code 1: PVC-U, grey

Code 2: PVC-C

Code 4: ABS

Code 5: PP-H, grey

Code 20: PVDF

**Multi-port design (code M)**

DN	Connection type code <sup>1)</sup>								
	2		4	33	39	3M	3T	78*	7R
	Material code <sup>2)</sup>								
	1, 2	5	1, 5	1	1	1, 2	1	1, 5	1, 5
10	X	-	-	-	-	-	-	-	-
15	X	X	X	X	X	X	X	X	X
20	X	X	X	X	X	X	X	X	X
25	X	X	X	X	X	X	X	X	X
32	X	X	X	X	X	X	X	X	X
40	X	X	X	X	X	X	X	X	X
50	X	X	X	X	X	X	X	X	X
65	-	-	-	-	-	-	-	-	-
80	-	-	-	-	-	-	-	-	-
100	-	-	-	-	-	-	-	-	-

\* Inserts according to valve body material,  
special version: PE insert, design code 1187

1) **Connection type**

Code 2: Union end with insert (solvent cement or weld socket) - DIN

Code 4: Union end with flange EN 1092, PN 10, form B, face-to-face dimension FTF EN 558 series 1, ISO 5752, basic series 1

Code 33: Union end with inch insert - BS (socket)

Code 39: Union end with flange ANSI Class 125/150 RF

Code 3M: Union end with inch insert – ASTM (socket)

Code 3T: Union end with JIS insert (socket)

Code 78: Union end with insert (for IR butt welding) - DIN

Code 7R: Union end with insert (Rp threaded socket) - DIN

2) **Ball valve material**

Code 1: PVC-U, grey

Code 2: PVC-C

Code 5: PP-H, grey

## Order data

The order data provide an overview of standard configurations.

Please check the availability before ordering. Other configurations available on request.

## Order codes

1 Type	Code
Ball valve, plastic, manually operated	717

2 DN	Code
DN 10	10
DN 15	15
DN 20	20
DN 25	25
DN 32	32
DN 40	40
DN 50	50
DN 65	65
DN 80	80
DN 100	100

3 Body configuration	Code
2/2-way body	D
Multi-port version	M

4 Connection type	Code
Union end with insert (solvent cement or weld socket) - DIN	2
Union end with flange EN 1092, PN 10, form B, face-to-face dimension FTF EN 558 series 1, ISO 5752, basic series 1	4
Union end with inch insert - BS (socket)	33
Union end with flange ANSI Class 125/150 RF	39
Union end with inch insert – ASTM (socket)	3M
Union end with JIS insert (socket)	3T
Union end with insert (for IR butt welding) - DIN	78
Union end with insert (Rp threaded socket) - DIN	7R
Threaded socket NPT	31

5 Ball valve material	Code
PVC-U, grey	1
PVC-C	2
PVDF	20
ABS	4
PP-H, grey	5

6 Seal material	Code
FKM	4
EPDM	14

7 Control function	Code
Manually operated	0
Manually operated, hand lever, lockable	L

8 Ball config./port position	Code
2/2-way body	
R ball (control ball) for 0°- 90° control range linear control characteristic between port position and percentage flow rate	R
Multi-port version	
L-port, standard end position "Open", connection 2 and 3 open, L-port, standard end position "Closed", connection 1 and 3 open	L
T-port, standard end position "Open", connection 1, 2 and 3 open, T-port, standard end position "Closed", connection 1 and 3 open	T
T-port, end position "Open", connection 1 and 3 open, T-port, end position "Closed", connection 1 and 2 open	2
T-port, end position "Open", connection 1 and 2 open, T-port, end position "Closed", connection 2 and 3 open	3
T-port, end position "Open", connection 2 and 3 open, T-port, end position "Closed", connection 1, 2 and 3 open	4
L-port, end position "Open", connection 1 and 3 open, L-port, end position "Closed", connection 1 open	6

9 Type of design	Code
Without	
Insert in PE	1187

**Order example**

Ordering option	Code	Description
1 Type	717	Ball valve, plastic, manually operated
2 DN	15	DN 15
3 Body configuration	M	Multi-port version
4 Connection type	33	Union end with inch insert - BS (socket)
5 Ball valve material	1	PVC-U, grey
6 Seal material	14	EPDM
7 Control function	0	Manually operated
8 Ball config./port position	L	L-port, standard end position "Open", connection 2 and 3 open, L-port, standard end position "Closed", connection 1 and 3 open
9 Type of design		Without



## Technical data

### Medium

**Working medium:** Corrosive, inert, gaseous and liquid media and steam which have no negative impact on the physical and chemical properties of the body and seal material.

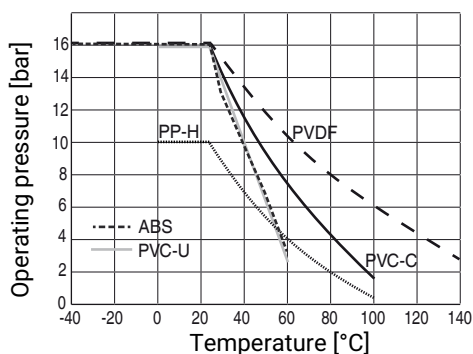
### Temperature

**Media temperature:** see Pressure / temperature diagram  
 Seal material: FPM: -15 – 210 °C  
 EPDM: -20 – 95 °C

**Ambient temperature:** Valve body ABS: -20 to 60 °C  
 Valve body PP-H: 5 to 60 °C  
 Valve body PVC-U, PVC-C: 10 to 50 °C  
 Valve body PVDF: -5 to 50 °C

### Pressure

**Operating pressure:** Pressure / temperature diagram



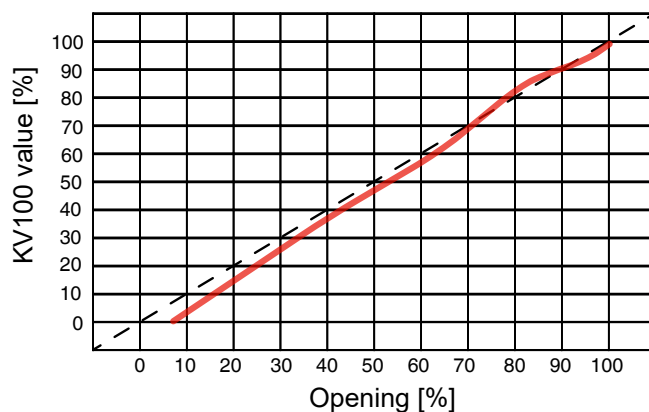
Data for extended temperature ranges on request. Please note that the ambient temperature and media temperature generate a combined temperature at the valve body which must not exceed the above values.

**Kv values:**

DN	Body configuration						
	2/2-way		Multi-port (code M)				
	(code D)	(code R)	T-port	T-port	T-port	T-port	L-port
10	4.8	4.98	2.2	1.5	2.4	4.7	2.9
15	12.0	5.28	3.3	2.1	3.9	11.7	4.4
20	23.1	8.10	8.1	5.7	8.7	22.8	9.0
25	46.2	15.36	12.3	8.4	14.7	45.6	15.9
32	66.0	28.68	23.4	16.2	27.6	63.0	28.5
40	105.0	35.52	28.5	19.8	36.0	102.0	37.2
50	204.0	64.08	54.0	37.2	72.0	192.0	73.2
65	315.0	-	-	-	-	-	-
80	426.0	-	-	-	-	-	-
100	570.0	-	-	-	-	-	-

Kv values in m³/h

**Control diagram:** with control ball (code R)



For 0°- 90° control range, linear control characteristic between port position and percentage flow rate.

NOTE: Ball configuration (R) cannot be retrofitted to standard 2/2-way bodies at a later date.

### Mechanical data

**Torques:**

DN	2/2-way code D				Multi-port code M		
	Optional	Standard		Optional	Optional	Standard	
	PS 6	PS 10	PS 16	PS 16	PS 10	PS 10	PS 16
	Material code <sup>1)</sup>						
	1, 2, 4, 5, 20	5	1, 2, 20	4	1, 2	5	1, 2
<b>10</b>	-	2.4	3.6	3.0	-	-	-
<b>15</b>	-	2.4	3.6	3.0	2.4	2.4	3.6
<b>20</b>	-	3.6	4.0	4.0	3.6	3.6	4.8
<b>25</b>	-	4.8	6.0	6.0	5.0	5.0	5.4
<b>32</b>	-	7.2	7.2	7.2	7.2	7.2	11.5
<b>40</b>	-	8.6	10.0	10.0	9.6	10.0	14.8
<b>50</b>	-	12.4	16.0	16.0	14.8	14.8	23.3
<b>65</b>	20.0	25.0	30.0	30.0	-	-	-
<b>80</b>	25.0	35.0	45.0	45.0	-	-	-
<b>100</b>	40.0	55.0	65.0	65.0	-	-	-

Torques in Nm

- 1) **Ball valve material**  
 Code 1: PVC-U, grey  
 Code 2: PVC-C  
 Code 4: ABS  
 Code 5: PP-H, grey  
 Code 20: PVDF

**Weight:**

DN	Connection (code)									
	2				4				7R, 31	
	Material (code)									
	1	2	5	20	1	2	5	20	1	5
<b>10</b>	215	234	150	291	-	-	-	-	-	-
<b>15</b>	205	223	145	272	375	481	387	547	210	145
<b>20</b>	330	358	218	445	590	663	504	772	335	220
<b>25</b>	438	476	298	584	713	895	697	1024	448	298
<b>32</b>	693	753	480	938	1108	1379	1075	1583	678	488
<b>40</b>	925	1007	682	1242	1485	1761	1346	2024	955	682
<b>50</b>	1577	1717	1166	2187	2347	2741	2060	3219	1667	1181
<b>65</b>	4380	4789	3090	4380	6610	6413	4500	8588	4395	4395
<b>80</b>	7200	7691	5080	7200	9330	9669	6455	12122	7260	7260
<b>100</b>	11141	11931	7725	11141	13815	14697	9090	17949	11100	11100

Weight in g

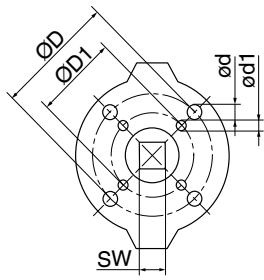
DN	Connection (code)										
	33	39			3M	3T	78				
	Material (code)										
	1	1	2	5	1	2	1	1*	5	5*	20
<b>10</b>	210	-	-	-	-	-	-	-	-	-	-
<b>15</b>	205	460	481	387	215	234	225	220	220	210	299
<b>20</b>	335	632	663	504	345	375	335	340	340	325	466
<b>25</b>	433	853	895	697	448	487	448	443	443	420	604
<b>32</b>	703	1313	1379	1075	718	780	728	693	693	570	951
<b>40</b>	925	1669	1761	1346	975	1062	1015	945	945	900	1284
<b>50</b>	1647	2577	2741	2060	1712	1864	1727	1607	1607	1500	2229
<b>65</b>	4380	6610	6413	4500	4390	4762	4435	4400	3150	3100	4700
<b>80</b>	7250	9330	9669	6455	7210	7850	7250	7100	5240	5180	7150
<b>100</b>	10995	13815	14697	9090	11065	12222	11580	10800	7970	7800	11300

\* Special version 1187

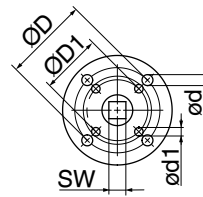
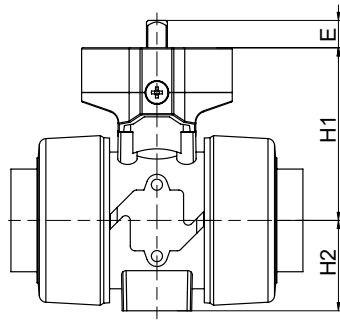
Weight in g

## Dimensions

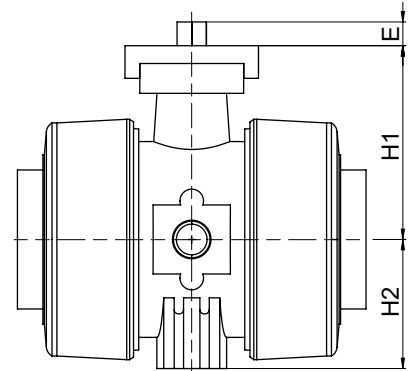
### Connection flange



DN 10 - 50



DN 65 - 100



DN	SW	E	H1	H2	ØD x ød	ØD1 x ød1
10	11.0	12.0	58.0	29.0	F03 x 5.5	F04 x 5.5
15	11.0	12.0	58.0	29.0	F03 x 5.5	F04 x 5.5
20	11.0	12.0	69.0	35.0	F03 x 5.5	F05 x 6.5
25	11.0	12.0	74.0	39.0	F03 x 5.5	F05 x 6.5
32	14.0	16.0	91.0	46.0	F05 x 6.5	F07 x 8.5
40	14.0	16.0	78.0	52.0	F05 x 6.5	F07 x 8.5
50	14.0	16.0	114.0	62.0	F05 x 6.5	F07 x 8.5
65	14.0	16.0	131.0	87.0	F07 x 9.0	F05 x 6.5
80	14.0	16.0	131.0	105.0	F07 x 9.0	F05 x 6.5
100	17.0	19.0	149.0	129.0	F07 x 9.0	F05 x 6.5

Dimensions in mm

## 2/2-way body

### Valve body material PVC-U (code 1), body configuration D

Socket

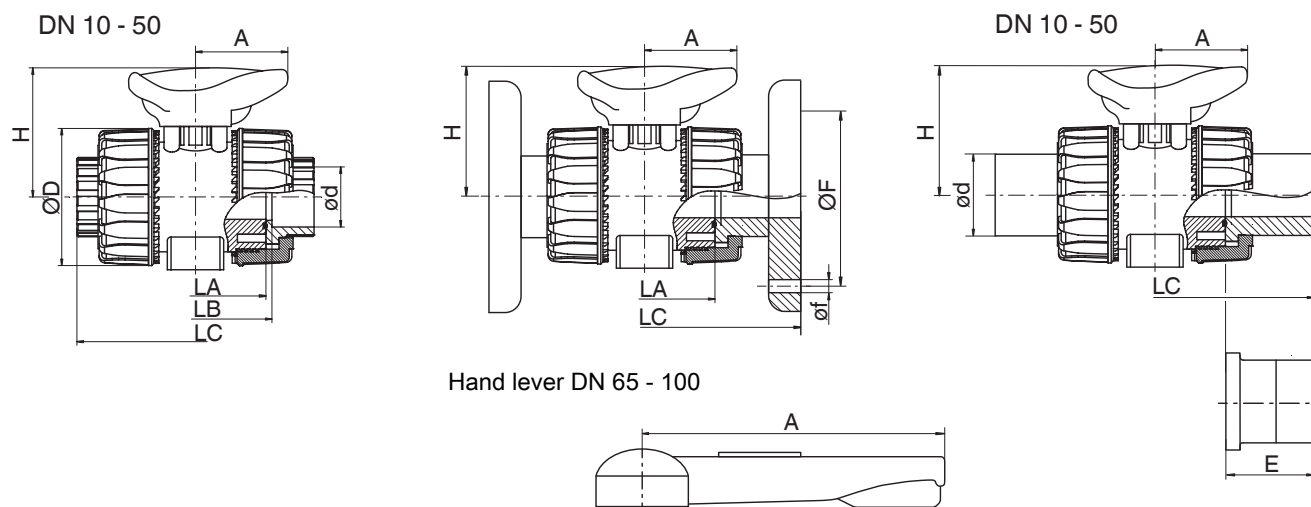
Connection type code 2, 31, 33, 3M, 3T, 7R

Flange

Connection type code 4, 39

Butt weld spigot

Connection type code 78, 78\*



DN	NPS	ød	ØD	A	H	LA	Connection type code <sup>1)</sup>							
							4			39			78*	
							LC			øf		ØF		
15	1/2"	20.0	54.0	40.0	54.0	65.0	130.0	143.0	175.0	14.0	15.9	65.0	60.3	55.0
20	3/4"	25.0	65.0	49.0	65.0	70.0	150.0	172.0	210.0	14.0	15.9	75.0	69.9	70.0
25	1"	32.0	73.0	49.0	69.5	78.0	160.0	187.0	226.0	14.0	15.9	85.0	79.4	74.0
32	1 1/4"	40.0	86.0	64.0	82.5	88.0	180.0	190.0	243.0	18.0	15.9	100.0	88.9	78.0
40	1 1/2"	50.0	98.0	64.0	89.0	93.0	200.0	212.0	261.0	18.0	15.9	110.0	98.4	84.0
50	2"	63.0	122.0	76.0	108.0	111.0	230.0	234.0	293.0	18.0	19.1	125.0	120.7	91.0
65	2 1/2"	75.0	164.0	175.0	164.0	133.0	290.0	290.0	356.0	17.0	18.0	145.0	139.7	111.0
80	3"	90.0	203.0	272.0	177.0	149.0	310.0	310.0	390.0	17.0	18.0	160.0	152.4	118.0
100	4"	110.0	238.0	330.0	195.0	167.0	350.0	350.0	431.0	17.0	18.0	180.0	190.5	132.0

Dimensions in mm

\* Inserts according to valve body material, special version: PE insert, design code 1187

#### 1) Connection type

Code 4: Union end with flange EN 1092, PN 10, form B, face-to-face dimension FTF EN 558 series 1, ISO 5752, basic series 1

Code 39: Union end with flange ANSI Class 125/150 RF

Code 78: Union end with insert (for IR butt welding) - DIN

**Valve body material PVC-U (code 1), body configuration D**

Socket

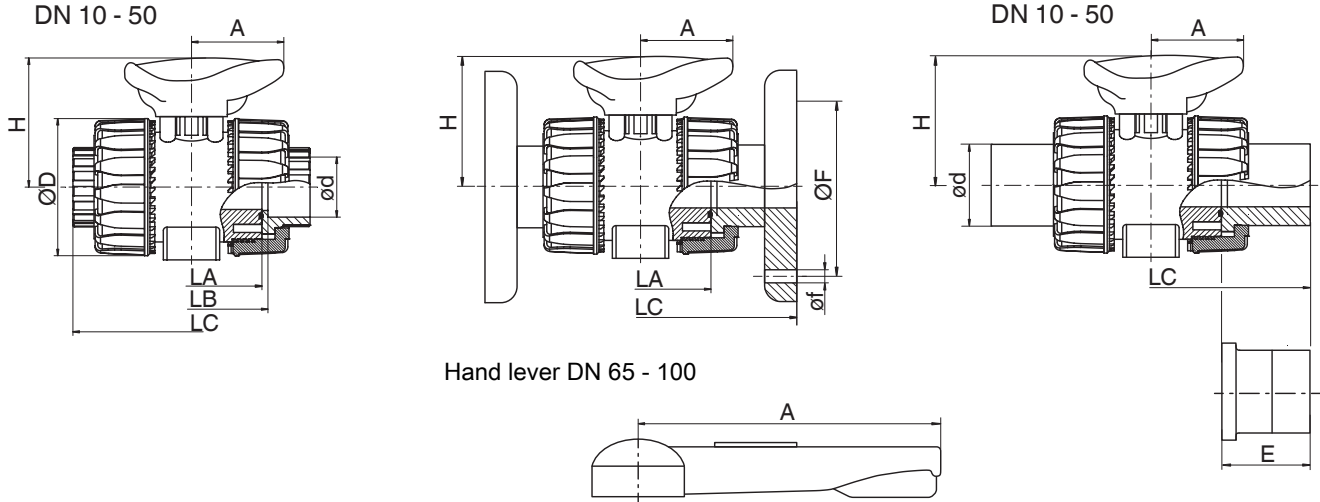
Connection type code 2, 31, 33, 3M, 3T, 7R

Flange

Connection type code 4, 39

Butt weld spigot

Connection type code 78, 78\*



DN	NPS	ød	ØD	A	LA	H	Connection type code <sup>1)</sup>										
							3M	2	33	3M	3T	7R	2	33	3M	3T	7R
							ød	LB			LC						
10	3/8"	16.0	54.0	40.0	65.0	54.0	-	75.0	74.0	-	-	-	103.0	103.0	-	-	-
15	1/2"	20.0	54.0	40.0	65.0	54.0	21.5	71.0	70.0	72.0	71.0	80.0	103.0	103.0	117.0	131.0	110.0
20	3/4"	25.0	65.0	49.0	70.0	65.0	26.9	77.0	77.0	78.0	77.0	83.5	115.0	115.0	129.0	147.0	116.0
25	1"	32.0	73.0	49.0	78.0	69.5	33.7	84.0	83.0	84.6	84.0	96.0	128.0	128.0	142.0	164.0	134.0
32	1 1/4"	40.0	86.0	64.0	88.0	82.5	42.4	94.0	94.0	98.0	94.0	110.0	146.0	146.0	162.0	182.0	153.0
40	1 1/2"	50.0	98.0	64.0	93.0	89.0	48.4	102.0	104.0	102.0	102.0	113.0	164.0	164.0	172.0	212.0	156.0
50	2"	63.0	122.0	76.0	111.0	108.0	60.5	123.0	127.0	122.6	122.0	134.5	199.0	199.0	199.0	248.0	186.0
65	2 1/2"	75.0	164.0	175.0	133.0	164.0	75.3	147.0	147.0	146.0	145.0	174.5	235.0	235.0	235.0	267.0	235.0
80	3"	90.0	203.0	272.0	149.0	177.0	89.1	168.0	168.0	174.0	165.0	203.5	270.0	270.0	270.0	294.0	270.0
100	4"	110.0	238.0	330.0	167.0	195.0	114.5	186.0	182.0	193.0	202.0	229.5	308.0	308.0	308.0	370.0	308.0

Dimensions in mm

1) **Connection type**

- Code 2: Union end with insert (solvent cement or weld socket) - DIN
- Code 33: Union end with inch insert - BS (socket)
- Code 3M: Union end with inch insert - ASTM (socket)
- Code 3T: Union end with JIS insert (socket)
- Code 7R: Union end with insert (Rp threaded socket) - DIN

**Valve body material PVC-C (code 2), body configuration D**

Socket

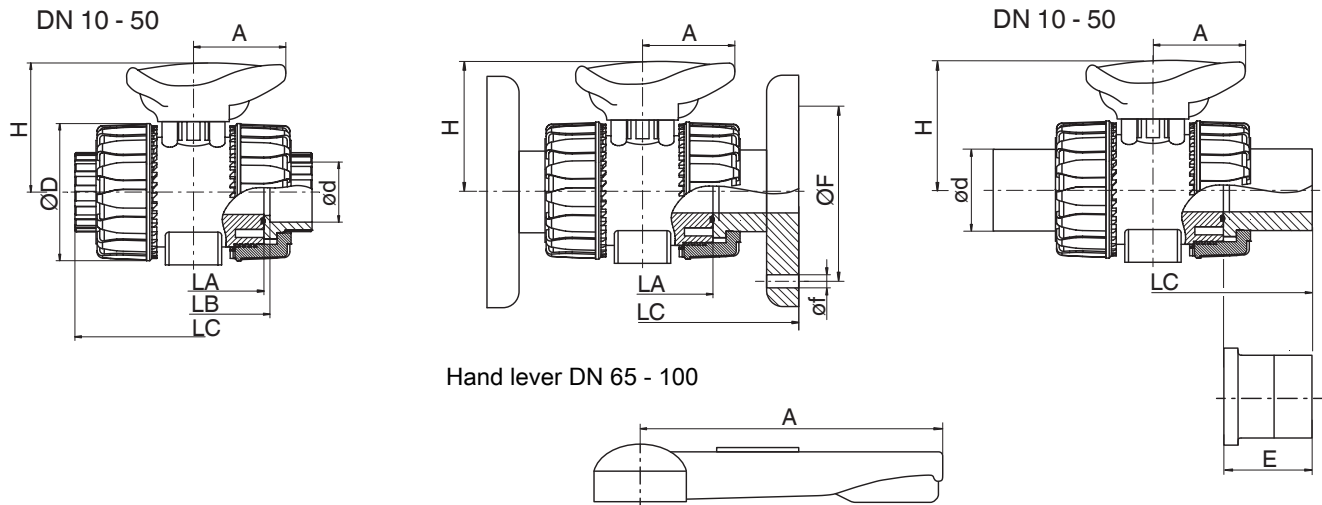
Connection type code 2, 31, 33, 3M, 3T, 7R

Flange

Connection type code 4, 39

Butt weld spigot

Connection type code 78, 78\*



DN	NPS	ød	øD	A	H	LA	Connection type code <sup>1)</sup>										
							3M	2	3M	2	4	39	3M	4	39	4	39
							ød	LB	LC		øf		ØF				
10	3/8"	16.0	54.0	40.0	54.0	65.0	-	75.0	-	103.0	-	-	-	-	-	-	-
15	1/2"	20.0	54.0	40.0	54.0	65.0	21.5	71.0	72.0	103.0	130.0	143.0	117.0	14.0	15.9	65.0	60.3
20	3/4"	25.0	65.0	49.0	65.0	70.0	26.9	77.0	78.0	115.0	150.0	172.0	129.0	14.0	15.9	75.0	69.9
25	1"	32.0	73.0	49.0	69.5	78.0	33.7	84.0	84.6	128.0	160.0	187.0	142.0	14.0	15.9	85.0	79.4
32	1 1/4"	40.0	86.0	64.0	82.5	88.0	42.4	94.0	98.0	146.0	180.0	190.0	162.0	18.0	15.9	100.0	88.9
40	1 1/2"	50.0	98.0	64.0	89.0	93.0	48.4	102.0	102.0	164.0	200.0	212.0	172.0	18.0	15.9	110.0	98.4
50	2"	63.0	122.0	76.0	108.0	111.0	60.5	123.0	122.6	199.0	230.0	234.0	199.0	18.0	19.1	125.0	120.7
65	2 1/2"	75.0	164.0	175.0	164.0	133.0	75.3	147.0	146.0	235.0	290.0	290.0	235.0	17.0	18.0	145.0	139.7
80	3"	90.0	203.0	272.0	177.0	149.0	89.1	168.0	174.0	270.0	310.0	310.0	270.0	17.0	18.0	160.0	152.4
100	4"	110.0	238.0	330.0	195.0	167.0	114.5	186.0	193.0	308.0	350.0	350.0	308.0	17.0	18.0	180.0	190.5

Dimensions in mm

1) **Connection type**

Code 2: Union end with insert (solvent cement or weld socket) - DIN

Code 4: Union end with flange EN 1092, PN 10, form B, face-to-face dimension FTF EN 558 series 1, ISO 5752, basic series 1

Code 39: Union end with flange ANSI Class 125/150 RF

Code 3M: Union end with inch insert – ASTM (socket)

**Valve body material ABS (code 4), body configuration D**

Socket

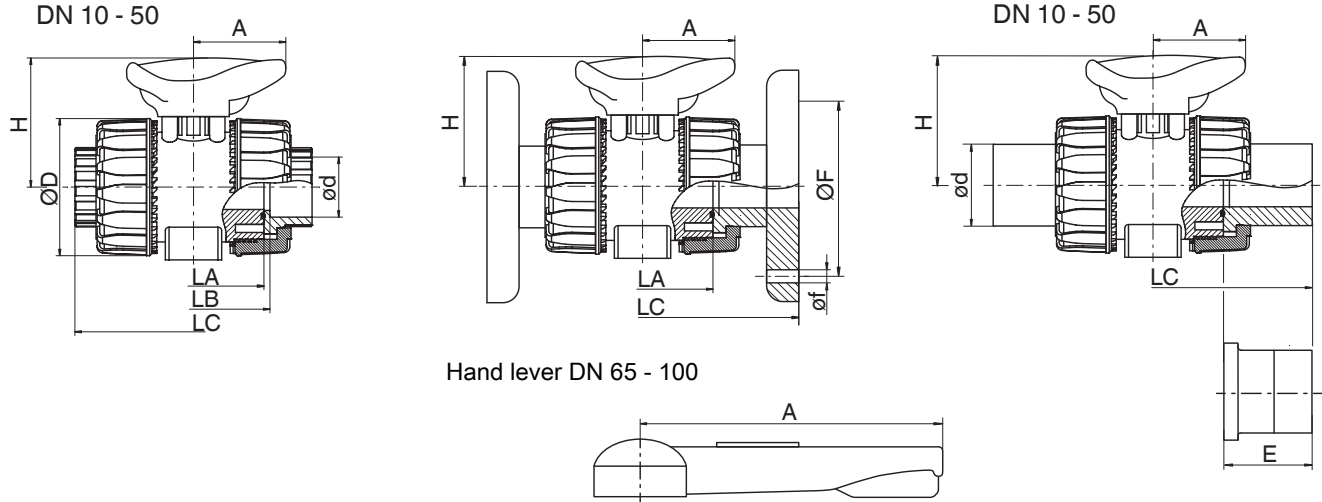
Connection type code 2, 31, 33, 3M, 3T, 7R

Flange

Connection type code 4, 39

Butt weld spigot

Connection type code 78, 78\*



DN	NPS	ød	øD	A	LA	H	Connection type code <sup>1)</sup>				
							2	7R	33	2, 33	7R
							LB			LC	
10	3/8"	15.0	55.0	40.0	65.0	49.0	75.0	-	75.0	103.0	-
15	1/2"	20.0	55.0	40.0	65.0	49.0	71.0	80.0	71.0	103.0	110.0
20	3/4"	25.0	66.0	49.0	70.0	59.0	77.0	83.4	77.0	115.0	116.0
25	1"	32.0	75.0	49.0	78.0	66.0	84.0	95.8	84.0	128.0	134.0
32	1 ¼"	40.0	87.0	64.0	88.0	75.0	94.0	110.2	94.0	146.0	153.0
40	1 ½"	50.0	100.0	64.0	93.0	87.0	102.0	113.2	102.0	164.0	156.0
50	2"	63.0	122.0	76.0	111.0	101.0	123.0	134.6	123.0	199.0	186.0
65	2 ½"	75.0	164.0	175.0	133.0	164.0	147.0	-	147.0	235.0	-
80	3"	90.0	203.0	272.0	149.0	177.0	168.0	-	168.0	270.0	-
100	4"	110.0	238.0	330.0	167.0	195.0	186.0	-	186.0	308.0	-

Dimensions in mm

1) **Connection type**

Code 2: Union end with insert (solvent cement or weld socket) - DIN

Code 33: Union end with inch insert - BS (socket)

Code 7R: Union end with insert (Rp threaded socket) - DIN



**Valve body material PP-H (code 5), body configuration D**

Socket

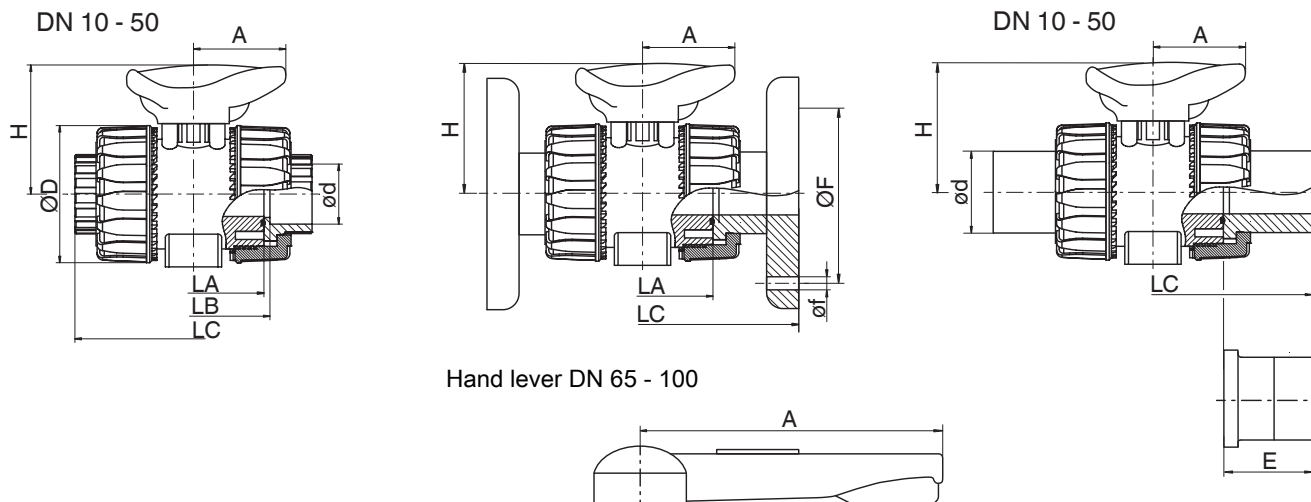
Connection type code 2, 31, 33, 3M, 3T, 7R

Flange

Connection type code 4, 39

Butt weld spigot

Connection type code 78, 78\*



DN	NPS	ød	øD	A	H	LA	Connection type code <sup>1)</sup>												
							2	7R	2	4	39	78/78*	7R	78/78*	4	39	4	39	
							LB		LC				E		øf		øF		
10	3/8"	16.0	54.0	40.0	-	65.0	75.0	-	102.0	-	-	-	-	-	-	-	-	-	-
15	1/2"	20.0	54.0	40.0	54.0	65.0	73.0	80.0	102.0	130.0	143.0	175.0	110.0	55.0	14.0	15.9	65.0	60.3	
20	3/4"	25.0	65.0	49.0	65.0	70.0	82.0	83.0	114.0	150.0	172.0	210.0	116.0	70.0	14.0	15.9	75.0	69.9	
25	1"	32.0	73.0	49.0	69.5	78.0	90.0	96.0	126.0	160.0	187.0	226.0	134.0	77.0	14.0	15.9	85.0	79.4	
32	1 1/4"	40.0	86.0	64.0	82.5	88.0	100.0	110.0	141.0	180.0	190.0	243.0	153.0	78.0	18.0	15.9	100.0	88.9	
40	1 1/2"	50.0	98.0	64.0	89.0	93.0	117.0	113.0	164.0	200.0	212.0	261.0	156.0	84.0	18.0	15.9	110.0	98.4	
50	2"	63.0	122.0	76.0	108.0	111.0	144.0	134.0	199.0	230.0	234.0	293.0	186.0	91.0	18.0	15.9	125.0	120.7	
65	2 1/2"	75.0	164.0	175.0	164.0	133.0	153.0	-	213.0	290.0	290.0	356.0	-	111.0	17.0	18.0	145.0	139.7	
80	3"	90.0	203.0	272.0	177.0	149.0	173.0	-	239.0	310.0	310.0	390.0	-	118.0	17.0	18.0	160.0	152.4	
100	4"	110.0	238.0	330.0	195.0	167.0	199.0	-	268.0	350.0	350.0	431.0	-	132.0	17.0	18.0	180.0	190.5	

Dimensions in mm

\* Inserts according to valve body material, special version: PE insert, design code 1187

1) **Connection type**

- Code 2: Union end with insert (solvent cement or weld socket) - DIN
- Code 4: Union end with flange EN 1092, PN 10, form B, face-to-face dimension FTF EN 558 series 1, ISO 5752, basic series 1
- Code 39: Union end with flange ANSI Class 125/150 RF
- Code 78: Union end with insert (for IR butt welding) - DIN
- Code 7R: Union end with insert (Rp threaded socket) - DIN

**Valve body material PVDF (code 20), body configuration D**

Socket

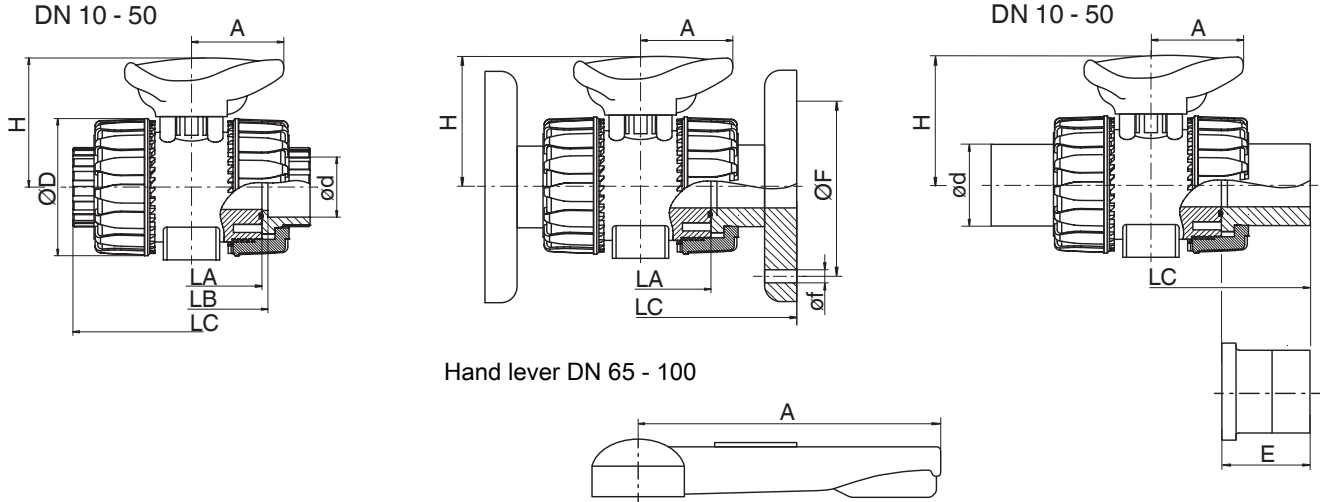
Connection type code 2, 31, 33, 3M, 3T, 7R

Flange

Connection type code 4, 39

Butt weld spigot

Connection type code 78, 78\*



DN	NPS	ød	øD	A	H	LA	Connection type code <sup>1)</sup>								
							2	2	4	78	4	39	4	39	78*
							LB	LC		øf		ØF		E	
10	3/8"	16.0	54.0	40.0	54.0	65.0	74.5	102.0	-	-	-	-	-	-	-
15	1/2"	20.0	54.0	40.0	54.0	65.0	73.0	102.0	130.0	124.0	14.0	15.9	65.0	60.5	30.0
20	3/4"	25.0	65.0	49.0	65.0	70.0	82.0	114.0	150.0	144.0	14.0	15.9	75.0	70.0	37.0
25	1"	32.0	73.0	49.0	69.5	78.0	90.0	126.0	160.0	154.0	14.0	15.9	85.0	79.5	39.5
32	1 1/4"	40.0	86.0	64.0	82.5	88.0	100.0	141.0	180.0	174.0	18.0	15.9	100.0	89.0	44.5
40	1 1/2"	50.0	98.0	64.0	89.0	93.0	117.0	164.0	200.0	194.0	18.0	15.9	110.0	98.5	51.5
50	2"	63.0	122.0	76.0	108.0	111.0	144.0	199.0	230.0	224.0	18.0	19.1	134.0	121.0	58.0
65	2 1/2"	75.0	164.0	175.0	164.0	133.0	147.0	235.0	290.0	355.0	18.0	18.0	145.0	140.0	110.5
80	3"	90.0	203.0	272.0	177.0	149.0	173.0	239.0	310.0	389.0	18.0	18.0	160.0	152.5	118.5
100	4"	110.0	238.0	330.0	195.0	167.0	186.0	308.0	350.0	427.0	18.0	18.0	180.0	190.5	130.5

Dimensions in mm

\* Inserts according to valve body material, special version: PE insert, design code 1187

1) **Connection type**

Code 2: Union end with insert (solvent cement or weld socket) - DIN

Code 4: Union end with flange EN 1092, PN 10, form B, face-to-face dimension FTF EN 558 series 1, ISO 5752, basic series 1

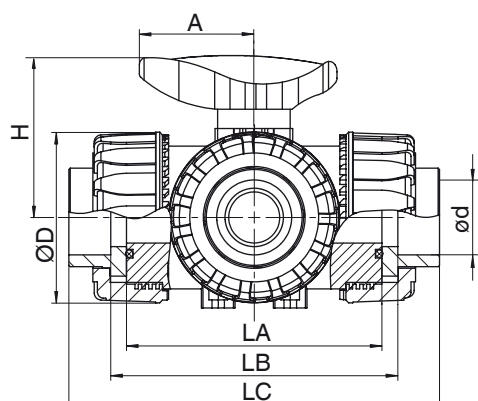
Code 39: Union end with flange ANSI Class 125/150 RF

Code 78: Union end with insert (for IR butt welding) - DIN

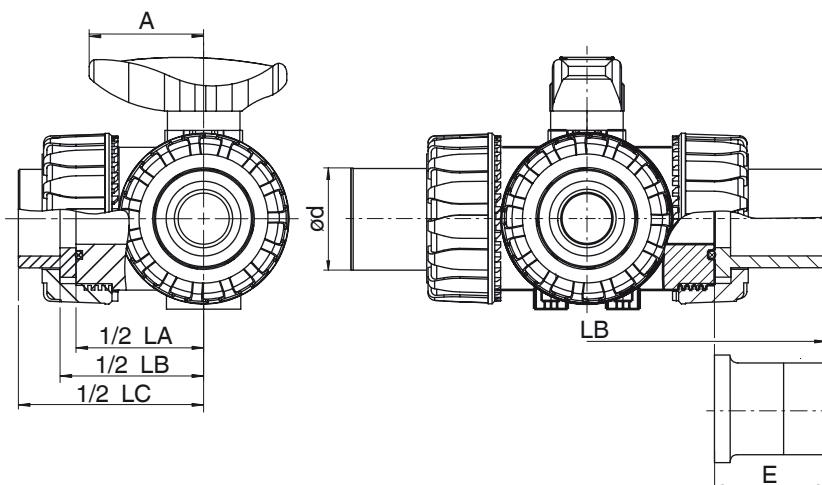
## Multi-port design

### Valve body material PVC-U (code 1), body configuration M

Connection type code 2, 33, 3M, 3T, 7R



Connection type code 78, 78\*



DN	NPS	ød	ØD	A	H	LA	Connection type code <sup>1)</sup>											
							3M	2	33	3M	3T	7R	2, 33	3M	3T	7R	78*	78*
							ød	LB						LC		E		
10	3/8"	16.0	54.0	40.0	54.0	80.0	-	90.0	-	-	-	-	118.0	-	-	-	-	-
15	1/2"	20.0	54.0	40.0	54.0	80.0	21.5	86.0	85.0	87.2	86.0	95.0	118.0	132.2	146.0	125.0	190.0	55.0
20	3/4"	25.0	65.0	49.0	65.0	100.0	26.9	107.0	106.8	108.2	107.0	114.0	145.0	159.2	177.0	146.0	240.0	70.0
25	1"	32.0	73.0	49.0	69.5	110.0	33.7	116.0	115.0	116.6	116.0	129.0	160.0	174.0	196.0	166.0	258.0	74.0
32	1 1/4"	40.0	86.0	64.0	82.5	131.0	42.4	136.5	136.6	141.0	137.0	151.0	188.5	205.0	225.0	195.5	287.0	78.0
40	1 1/2"	50.0	98.0	64.0	89.0	148.0	48.4	157.0	159.0	157.6	157.2	166.0	219.0	227.6	267.2	211.0	316.0	84.0
50	2"	63.0	122.0	76.0	108.0	179.0	60.5	190.5	194.2	190.6	190.0	199.0	266.5	267.0	316.0	253.5	361.0	91.0

Dimensions in mm

\* Inserts according to valve body material,  
special version: PE insert, design code 1187

#### 1) Connection type

Code 2: Union end with insert (solvent cement or weld socket) - DIN

Code 33: Union end with inch insert - BS (socket)

Code 3M: Union end with inch insert - ASTM (socket)

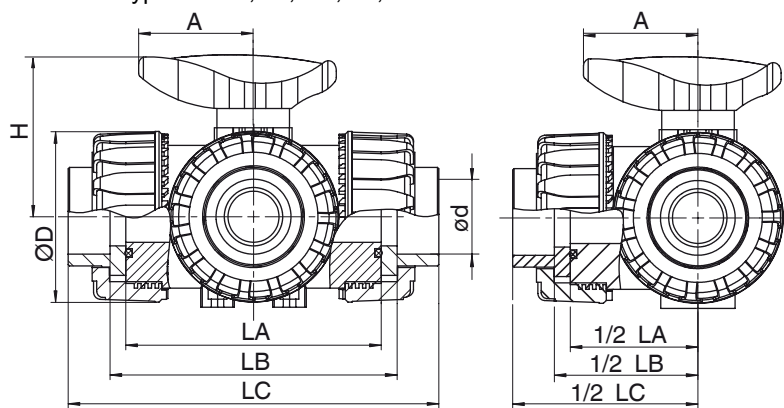
Code 3T: Union end with JIS insert (socket)

Code 78: Union end with insert (for IR butt welding) - DIN

Code 7R: Union end with insert (Rp threaded socket) - DIN

**Valve body material PVC-C (code 2), body configuration M**

Connection type code 2, 33, 3M, 3T, 7R



DN	NPS	ØD	A	H	LA	Connection type code <sup>1)</sup>					
						2	3M	2	3M	2	3M
						ød		LB		LC	
10	3/8"	54.0	40.0	54.0	80.0	16.0	-	90.0	-	118.0	-
15	1/2"	54.0	40.0	54.0	80.0	20.0	21.5	86.0	87.2	118.0	132.2
20	3/4"	65.0	49.0	65.0	100.0	25.0	26.9	107.0	108.2	145.0	159.2
25	1"	73.0	49.0	69.5	110.0	32.0	33.7	116.0	116.6	160.0	174.0
32	1 ¼"	86.0	64.0	82.5	131.0	40.0	42.4	136.5	141.0	188.5	205.0
40	1 ½"	98.0	64.0	89.0	148.0	50.0	48,4	157.0	157.6	219.0	227.6
50	2"	122.0	76.0	108.0	179.0	63.0	60.5	190.5	190.6	266.5	267.0

Dimensions in mm

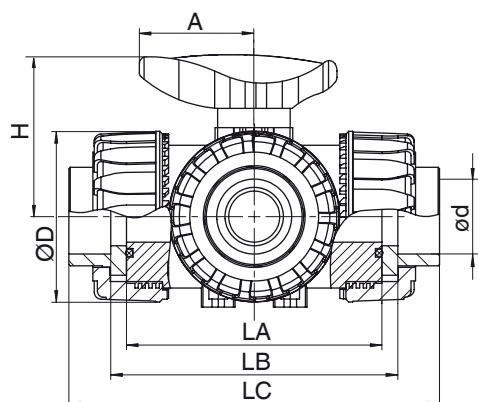
1) **Connection type**

Code 2: Union end with insert (solvent cement or weld socket) - DIN

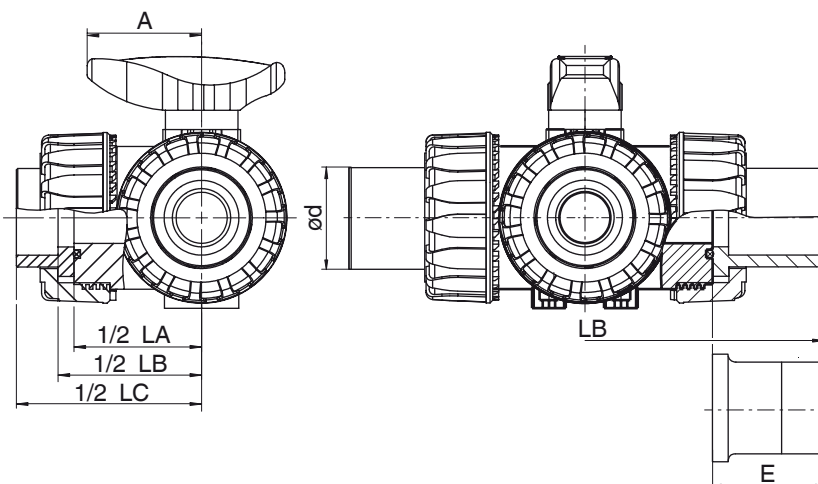
Code 3M: Union end with inch insert – ASTM (socket)

**Valve body material ABS (code 4), body configuration M**

Connection type code 2, 33, 3M, 3T, 7R



Connection type code 78, 78\*



DN	NPS	ød	ØD	A	H	LA	Connection type code <sup>1)</sup>											
							3M	2	33	3M	3T	7R	2, 33	3M	3T	7R	78*	78*
							ød	LB					LC					E
10	3/8"	16.0	54.0	40.0	54.0	80.0	-	90.0	-	-	-	-	118.0	-	-	-	-	-
15	1/2"	20.0	54.0	40.0	54.0	80.0	21.5	86.0	85.0	87.2	86.0	95.0	118.0	132.2	146.0	125.0	190.0	55.0
20	3/4"	25.0	65.0	49.0	65.0	100.0	26.9	107.0	106.8	108.2	107.0	114.0	145.0	159.2	177.0	146.0	240.0	70.0
25	1"	32.0	73.0	49.0	69.5	110.0	33.7	116.0	115.0	116.6	116.0	129.0	160.0	174.0	196.0	166.0	258.0	74.0
32	1 1/4"	40.0	86.0	64.0	82.5	131.0	42.4	136.5	136.6	141.0	137.0	151.0	188.5	205.0	225.0	195.5	287.0	78.0
40	1 1/2"	50.0	98.0	64.0	89.0	148.0	48.4	157.0	159.0	157.6	157.2	166.0	219.0	227.6	267.2	211.0	316.0	84.0
50	2"	63.0	122.0	76.0	108.0	179.0	60.5	190.5	194.2	190.6	190.0	199.0	266.5	267.0	316.0	253.5	361.0	91.0

Dimensions in mm

\* Inserts according to valve body material, special version: PE insert, design code 1187

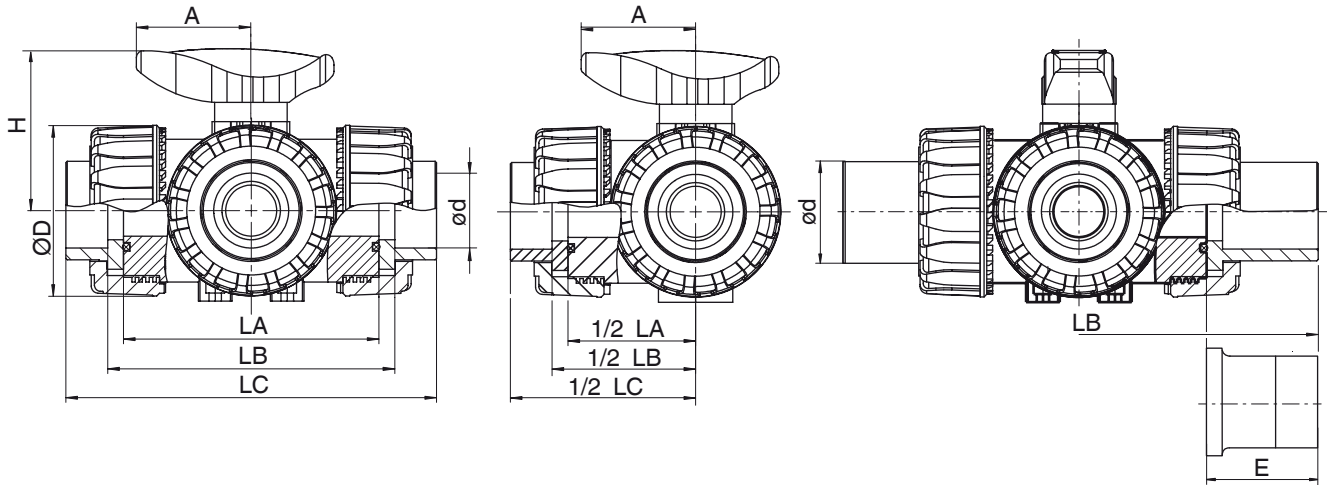
1) **Connection type**

- Code 2: Union end with insert (solvent cement or weld socket) - DIN
- Code 33: Union end with inch insert - BS (socket)
- Code 3M: Union end with inch insert - ASTM (socket)
- Code 3T: Union end with JIS insert (socket)
- Code 78: Union end with insert (for IR butt welding) - DIN
- Code 7R: Union end with insert (Rp threaded socket) - DIN

**Valve body material PP-H (code 5), body configuration M**

Connection type code 2, 33, 3M, 3T, 7R

Connection type code 78, 78\*



DN	NPS	ød	ØD	A	H	LA	Connection type code <sup>1)</sup>					
							2	7R	2	7R	78, 78*	78, 78*
							LB 1		LC		E	
15	1/2"	20.0	54.0	40.0	54.0	80.0	88.0	87.0	117.0	117.0	190.0	55.0
20	3/4"	25.0	65.0	49.0	65.0	100.0	112.0	114.0	144.0	143.0	240.0	70.0
25	1"	32.0	69.5	49.0	69.5	110.0	122.0	120.0	158.0	157.0	258.0	74.0
32	1 1/4"	40.0	82.5	64.0	82.5	131.0	142.5	140.0	183.5	184.5	287.0	78.0
40	1 1/2"	50.0	89.0	64.0	89.0	148.0	172.0	172.0	216.0	217.0	316.0	84.0
50	2"	63.0	108.0	76.0	108.0	179.0	211.5	211.0	266.5	265.5	361.0	91.0

Dimensions in mm

\* Inserts according to valve body material, special version: PE insert, design code 1187

1) **Connection type**

- Code 2: Union end with insert (solvent cement or weld socket) - DIN
- Code 78: Union end with insert (for IR butt welding) - DIN
- Code 7R: Union end with insert (Rp threaded socket) - DIN

## Certificates

Certificate	Standard	Item number
2.2 Supplier's certificate of compliance with the order	EN 10204	88363493
3.1 Material analysis	EN 10204	88363494

## Accessories

### GEMÜ 717 MPL



#### Mounting plate

Only for 2-way ball valves. The spacer plate kit includes a spacer plate (PP, glass fibre reinforced), screws (stainless steel), threaded inserts (brass). For the nominal sizes DN 65 - 100, the mounting plate is integrated into the ball valve.

#### Ordering information

Nominal size	Item number	Designation	Order designation
DN 10 - 25	88290237	Threaded insert M4 x 6	717 25MPL
DN 32 - 50	88290238	Threaded insert M6 x 10	717 50MPL



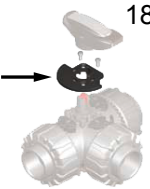
### 90° GEMÜ 717 PAL 90

#### Limitation of angle of rotation: 90°

By limiting the angle of rotation, the opening and closing of the handle and the ball of 3-way ball valves are restricted to an angle of 90°.

#### Ordering information

Nominal size	Item number	Order designation
DN 10 - 15	88443836	717 15PAL M 90
DN 20 - 25	88444009	717 25PAL M 90
DN 32 - 40	88444011	717 40PAL M 90
DN 50	88444012	717 50PAL M 90



### 180° GEMÜ 717 PAL 180

#### Limitation of angle of rotation: 180°

By limiting the angle of rotation, the opening and closing of the handle and the ball of 3-way ball valves are restricted to an angle of 180°.

#### Ordering information

Nominal size	Item number	Order designation
DN 10 - 15	88443937	717 15PAL M 180
DN 20 - 25	88444013	717 25PAL M 180
DN 32 - 40	88444014	717 40PAL M 180
DN 50	88444016	717 50PAL M 180

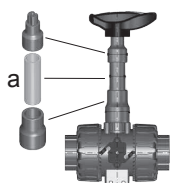


**GEMÜ 717 LOC****Handle locking mechanism**

The latch on the handle is lockable, optionally with a padlock. For the nominal sizes DN 65 - 100, the locking facility is integrated into the ball valve.

**Ordering information**

Nominal size	Item number	Order designation
DN 10 - 15	88434873	717 15LOC
DN 20 - 25	88330887	717 25LOC
DN 32 - 40	88434874	717 40LOC
DN 50	88330886	717 50LOC

**GEMÜ 717 LEX****Kit for hand lever extension**

Pipe a is not included in the scope of delivery and must be provided on-site.

**Ordering information**

Nominal size	Item number	Order designation
DN 10 - 15	88439623	717 15LEX
DN 20	88439793	717 20LEX
DN 25	88439794	717 25LEX
DN 32	88439796	717 32LEX
DN 40	88439797	717 40LEX
DN 50	88439599	717 50LEX



GEMÜ Gebr. Müller Apparatebau GmbH & Co. KG  
Fritz-Müller-Straße 6-8, 74653 Ingelfingen-Criesbach, Germany  
Phone +49 (0) 7940 1230 · info@gemue.de  
www.gemu-group.com