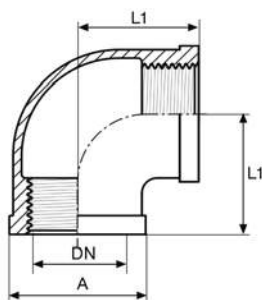


A 30 30



90

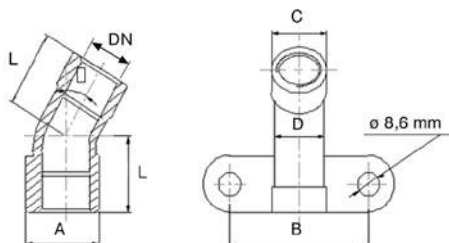
GOMITO 90° FF

- ELBOW 90° F/F
- WINKEL 90° I/I
- COUDE FF 90°
- CODO 90 HH

MATERIAL: AISI 316 / 1.4401 / 1.4408
THREAD: EN 10226-1 (ex ISO 7/1)
RATING: 150 PSI – PN10

CODE	DN	DN inch	A mm	L1 mm	g	kg	box	€
90108316	6	1/8"	17	19	39	10	450	3,23
90104316	8	1/4"	21,3	21	61	10	300	2,91
90308316	10	3/8"	23,5	21,3	68	10	250	3,23
90102316	15	1/2"	29	27	102	10	100	3,58
90304316	20	3/4"	36	33	164	10	50	5,51
90100316	25	1"	43	38	264	10	70	8,23
90114316	32	1"1/4	52	45	413	5	45	12,11
90112316	40	1"1/2	58	50	521	5	30	15,31
90200316	50	2"	71,5	57	808	5	15	26,28
90212316	65	2"1/2	87	69,7	1183	4	8	56,98
90300316	80	3"	99,5	77	1504	1	8	78,07
90400316	100	4"	126	98,2	2714	1	2	134,41

A 30 30



91

GOMITO FF CON FLANGIA

- WALL PLATE ELBOW F/F
- DECKENWINKEL MIT INNENGEWINDE
- COUDE FF AVEC BRIDE
- CODO PLACA

MATERIAL: AISI 316 / 1.4401 / 1.4408
THREAD: EN 10226-1 (ex ISO 7/1)
RATING: 150 PSI – PN10

CODE	DN	DN inch	degrees	L mm	A mm	B mm	C mm	D mm	g	kg	€
91102045	15	1/2"	45°	22,8	28,5	55	27	25	146	5	9,85
91102090	15	1/2"	90°	27,7	28,5	55	27	25	162	5	10,24