


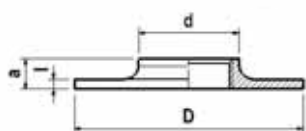
**ART.312**  
**ISO P4**





**PROTIMATICA**  
**BACKNUT, RECESSED**  
**CONTODADO CON SCANALATURA**  
**GEGENMUTER MIT AUSSPARUNG**

Dim. mm	velikost	koda	a	s			
15	1/2" Č	KA10830117	8	32	800	10	0,029
15	1/2" P	KA10835117	8	32	800	10	0,030
20	3/4" Č	KA10830118	10	36	550	10	0,043
20	3/4" P	KA10835118	10	36	550	10	0,045
25	1" Č	KA10830119	11	46	340	10	0,080
25	1" P	KA10835119	11	46	340	10	0,084
32	1 1/4" Č	KA10830220	13	55	200		0,120
32	1 1/4" P	KA10835220	13	55	200		0,126
40	1 1/2" Č	KA10830221	13	60	180		0,130
40	1 1/2" P	KA10835221	13	60	180		0,137
50	2" Č	KA10830222	14	75	100		0,214
50	2" P	KA10835222	14	75	100		0,225

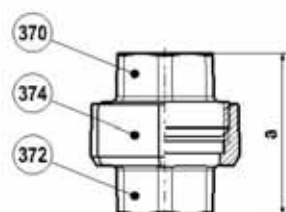
**ART.321**






**PRIROBNICA**  
**FLANGES**  
**FLANGES**  
**FLANSCH**

Dim. mm	velikost	koda	a	d	D	l			
50	2" Č	KA10800208	22	71	160	7	20		1,111
50	2" P	KA10805208	22	71	160	7	20		1,145

**ART.330**  
**ISO U1**



**PRIVIJALO, PLOŠČATO TESNENJE**  
**UNION, FLAT SEAT**  
**BOCCHETTONE A SEDE PIANA**  
**VERSCHRAUBUNG MIT FLACH DICHTEND**

Dim. mm	velikost	koda	a			
15	1/2" Č	KA10500103	48	110	10	0,245
15	1/2" P	KA10505103	48	110	10	0,257
20	3/4" Č	KA10500104	52	90	10	0,275
20	3/4" P	KA10505104	52	90	10	0,289
25	1" Č	KA10500105	58	60	10	0,347
25	1" P	KA10505105	58	60	10	0,364
32	1 1/4" Č	KA10500206	65	35		0,617
32	1 1/4" P	KA10505206	65	35		0,648
40	1 1/2" Č	KA10500207	70	25		0,770
40	1 1/2" P	KA10505207	70	25		0,809
50	2" Č	KA10500208	78	15		1,120
50	2" P	KA10505208	78	15		1,176
65	2 1/2" Č	KA10500209	85	12		1,879
65	2 1/2" P	KA10505209	85	12		1,937
80	3" Č	KA10500210	95	6		2,850
80	3" P	KA10505210	95	6		3,000